

Hanno® Clima-Tect Installation Instructions

Fast and easy to handle

Hanno® Clima-Tect panels can be easily and effortlessly installed. You need a cutter knife at most.

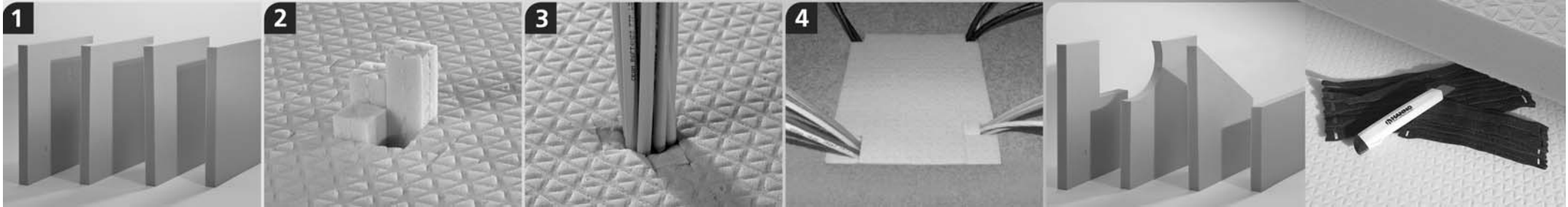
By acquiring the Hanno® Clima-Tect panels, you have taken the first step in the direction of more efficient and environmentally friendly server rooms. Many thanks for this!

Network cabinets

Cable opening closed with Hanno® Clima-Tect

www.clima-tect.com

No matter whether a first time installation or retrofitting: 4 steps and you achieve optimal energy savings in minutes and that without interrupting operations!



Step 1:

Adaptation of Hanno® Clima-Tect to the floor opening.
(The panels are supplied in accordance with a 600 floor grid size)

Step 2:

Breaking the cuboid at the required positions in the Hanno® Clima-Tect panel in order to create a cable passage.

Step 3:

Insertion or pushing of the cable through the resulting openings or slit.

Step 4:

Wedging of the Hanno® Clima-Tect panel into the opening in the false floor – finished!

Note:

Any form of clean openings can be very easily created with a cutter knife.

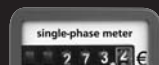
Hanno® Clima-Tect accessories set

comprising a cutter knife, 10 Velcro cable binders (200mm) and 10 Velcro cable binders (300mm) is available separately.

15 years
ageing resistance
dust-free



saves up to
10% energy!



flame retardant
in accordance with
DIN EN 13501-1 C s1 d0
(B1 DIN 4102)



Hanno Werk GmbH & Co. KG
Hanno-Ring 5
D-30880 Laatzen
Telephone +49(0)51 02/70 00-0
Fax +49(0)51 02/70 00-102
E-mail: info@hanno.com
Internet: www.hanno.com